

Match the maps with their corresponding mountain profiles. Imagine that you are viewing the mountain from the southern end (bottom) of the map (as indicated by the eye).

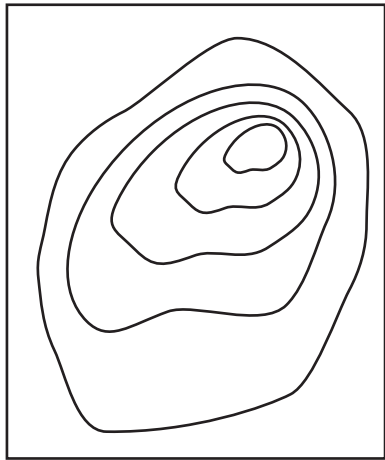
View 1 matches View \_\_\_\_

View 2 matches View \_\_\_\_

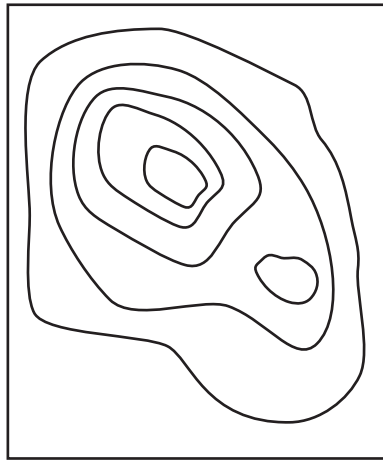
View 3 matches View \_\_\_\_

View 4 matches View \_\_\_\_

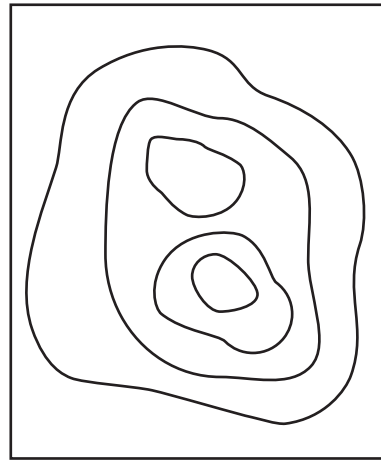
View 5 matches View \_\_\_\_



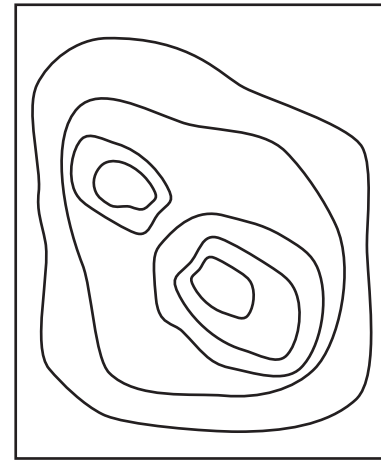
📍 View 1



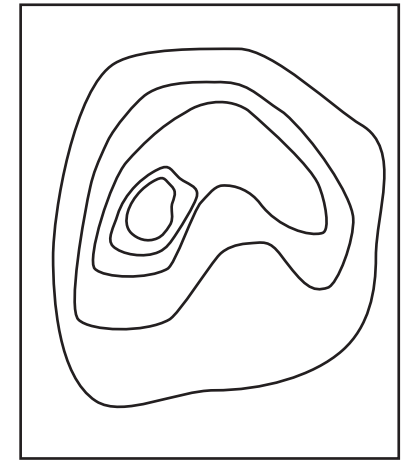
📍 View 2



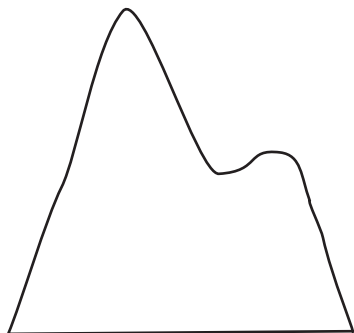
📍 View 3



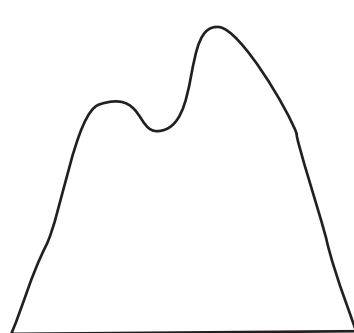
📍 View 4



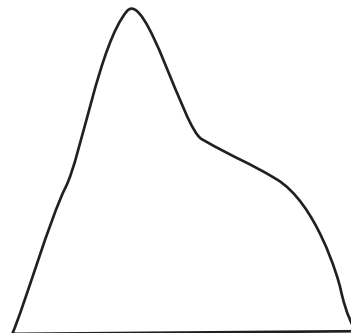
📍 View 5



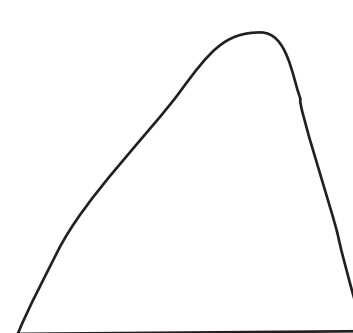
View A



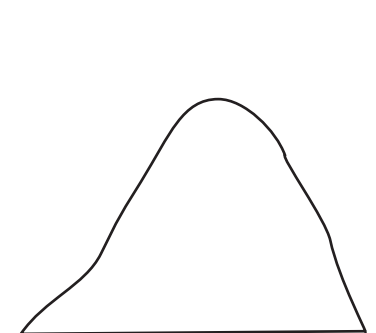
View B



View C



View D



View E